

# SEA CLOUD



SEA CLOUD  
C R U I S E S

Taxido e ferries

DTNO  
D TRAVEL N OUTLET LTD





## A legend beneath white sails.

*For New York heiress Marjorie Merriweather-Post and her very successful husband Edward Hutton, the only role money played was that it imposed not the slightest sense of modesty. So it comes as no surprise that their yacht, built in Germany in 1931, was anything but ordinary. Lady Marjorie set out to create a home at sea designed to reflect her superb taste and with every imaginable luxury down to the very last detail. Her desires were fulfilled and*

*the SEA CLOUD became an instant legend among international high society. In 1978, a group of Hamburg ship owners and businessmen purchased the SEA CLOUD with their own vision: to restore this once-elegant, four-masted barque and give her a new life as a five-star cruise ship. The aim was to preserve her legendary charm and uniquely elegant character. Today, the*

*SEA CLOUD is once again what she was 75 years ago: utterly one of a kind.*







# Sailing done the old-fashioned way.

*The SEA CLOUD is altogether remarkable. On one hand, careful restoration means that she still bears the original mark of Lady Marjorie's legacy. On the other hand, the crew works hard both on and high above the decks to sail the ship "by hands," just*



*balance in the lofty rigging to carry out their captain's commands. Look up. With a crackle, they unfurl yards of white sailcloth to catch the wind and carry the SEA CLOUD on her way. Four masts flying 22 full sails sweep us toward the horizon.*

*as it was done 75 years ago. It is a spectacle you likely have never experienced – nor will again – on the ocean today. Sailors*

*Feel your soul blissfully soothed by the sound of waves and the rush of wind. Time seems to stand still, which is entirely the point.*







# P

Paradise on earth is at sea.

*This morning, the Promenade Deck is the spot of choice. This wide semicircle, affectionately called the Blue Lagoon, extends from the stern of the SEA CLOUD. Blue cushions, already warmed by the sun, invite us to relax and savor the moment. You've come to*



*expect attentive service at the Lido Bar, as you should. From coffee to cocktails, crew*

*members see to it that you have everything you need and anything you want. Service on board the yacht earns only the best marks – and no wonder: 60 crew members answer to a maximum of 64 guests. And that perfect, personal attention*

*makes guests feel altogether spoiled every moment of the cruise. This is by design.*







Lady Marjorie's dream in white and gold.



*Consider Owner's Cabin No. 1, Lady Marjorie's private realm and the most extravagant shipboard bou-  
doir ever designed. Imagine its imposing  
fireplace, its ceiling-high,  
ornate dressing mirror,  
its precious Louis-  
Philippe chairs and  
bed finished in an-*



*tique white lacquer. Its white  
marble bath with golden  
swan fixtures. Can you believe you are on a  
ship? In fact, you are not just on a ship –  
you are on the SEA CLOUD, where  
expecting the absolute best  
becomes second nature.  
The SEA CLOUD is a ship  
like no other.*



*Lady Marjorie's husband preferred a more classic style. Glance into his maple-paneled suite to see what we mean. Seated at his secretary desk with mirrored glass panels, he closed some of his most lucra-*

*tive deals. In total, the SEA CLOUD has 32 cabins, all of them exterior. Like the Owner's Suites, six original guest cabins have been restored true to their vintage design.*









# R

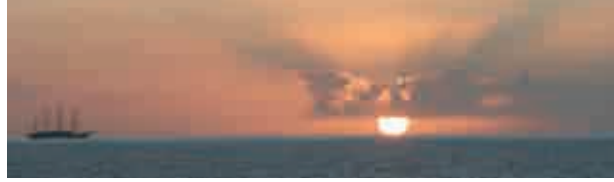
## Rendezvous with Neptune, Bacchus, and Lucullus.



*Meals aboard the SEA CLOUD evoke the traditional style of the classic American yacht club of the early 20th century. Gather here for formal welcome and farewell evenings. No matter the meal, though, you are treated to artfully prepared cuisine enjoyed during open seating. Inspired by nouvelle cuisine, the menu is enriched with local specialties, which*

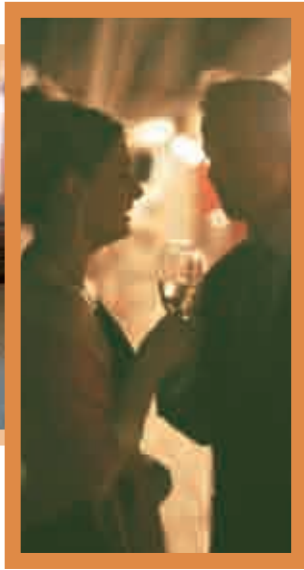
*change depending on our itinerary. The chefs rely on ingredients they personally select fresh from the market. And if you can take your eyes off the magnificent meal before you, notice the glowing red sun setting just beyond the dining room's picture windows. Even Mother Nature cooperates.*





# P

Perfect days from start to finish.



*Our day on the SEA CLOUD is winding down. The hours on deck were spent daydreaming, reading, and chatting with friends old and new. Today we swam in a secluded cove, sat down to a glorious dinner and finished the last glass of exquisite wine. The mood on board the*

*SEA CLOUD is relaxed in the evening hours. One jovial group has gathered in the elegant Lounge, while another prefers the open air of the Lido Bar. Out in the mild evening breeze, celebrate the beauty of the day with cocktails and soothing tunes.*





*S*ail the most beautiful waters in the world.



*During all the years in her life, the SEA CLOUD has traveled much of the world. Today she sails the Aegean Sea, the Tyrrhenian Sea, the Black Sea, the Mediterranean along the Côte d'Azur, and around the Lesser Antilles in the Caribbean. Dainty as she*

*is, the SEA CLOUD can enter smaller harbors and coves inaccessible to large cruise ships. Regardless of how well-traveled you might be, a voyage on the SEA CLOUD offers an entirely new perspective.*

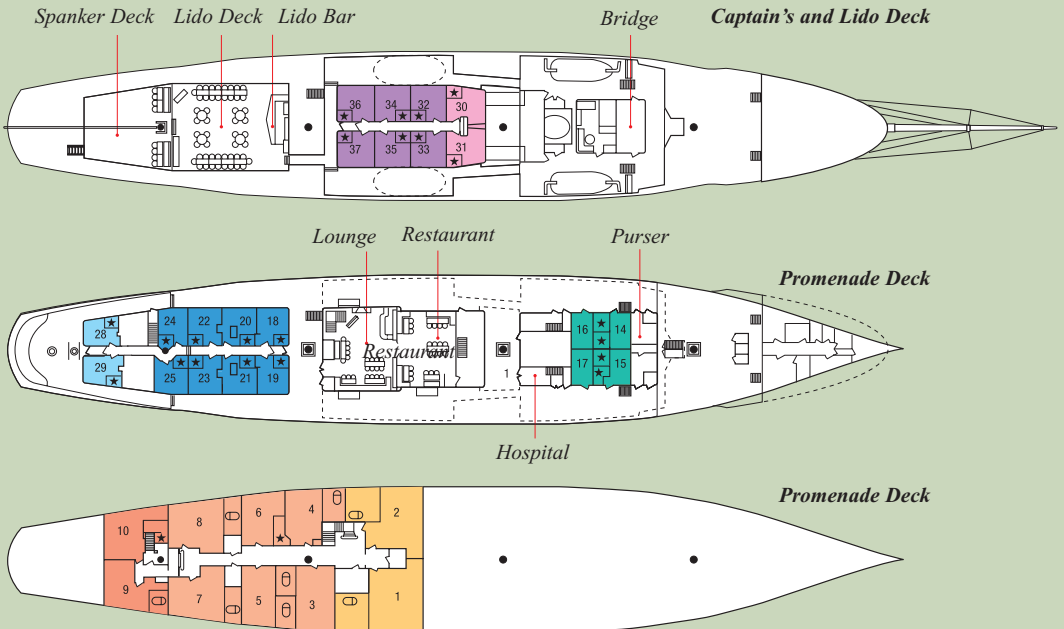


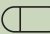


Do you have your own small group of fellow travelers? If so, we strongly suggest you charter this one-of-a-kind windjammer

for private use or book it as part of an incentive trip.

## Deck Plan and Technical Data of the SEA CLOUD



★ These cabins offer showers     These cabins feature bathtubs/showers    ● Masts

### Technical Data of the SEA CLOUD

- Length overall: 360 feet
- Beam: 50 feet
- Draft: 17 feet
- Main mast height above deck: 178 feet
- Total sail area: 32,000 square feet
- Number of sails: 30
- Passengers max.: 64
- Crew approx.: 60
- 32 outside cabins; of those, 10 cabins are original with marble bath, shower/WC, bathrobes, hairdryer, telephone, individually adjustable airconditioning, and an in-room safe
- Lido Deck with bar
- Dining room with open seating
- Lounge with desk area and laptop
- Infirmary
- Flag: Malta
- Year of construction: 1931

The highest demands, the sweetest dreams.



**Luxury Suite, Original Owner's Cabin No. 1:**

A marble fireplace, Louis-Philippe chairs and the double bed in antique white lacquer decorate the 410-square-foot suite with a walk-in closet. The 97-square-foot marble bathroom features a bathtub, a sink with golden swan fixtures, and an antique dressing table.



**Luxury Suite, Original Owner's Cabin No. 2:**

A maple-paneled living area, marble fireplace, grand bathroom, and large, walk-in closet. Mr. Hutton's suite is 366 squarefeet. The bathroom, done in red Carrara marble, is 97 squarefeet and features a bathtub, sink, and dresser.



**Deluxe Original Cabin No. 3:**

A green-grey marble bathroom, a walk-in closet, antique single beds, two stylish chairs, a mirrored dresser, and a desk give this 258-square-foot room its colonial flair. The bathroom, with tub, measures 43 square feet.



**Deluxe Original Cabin No. 4:**

Styled after a room in an English manor, this 237-square-foot cabin features carefully chosen antiques. It also has a large walk-in closet and a 54-square-foot bathroom with tub.



**Deluxe Original Cabin No. 5:**

With mahogany dressers, a marble bathroom and fireplace, antique furnishings, and a large, walk-in closet, this cabin of 215 square feet offers comfortable elegance. Its 58-square-foot marble bathroom is equipped with a tub.



**Deluxe Original Cabin No. 6:**

Warm, bright, light colors create the joyful atmosphere of this 194-square-foot cabin with its ornate antique furniture and marble fireplace. It also has a walk-in closet and a 43-square-foot bathroom with a shower.



**Deluxe Original Cabin No. 7:**

The owner's daughter, Dina, made it a habit to sleep in this 258-square-foot, comfortable cabin furnished with maple furniture, a fireplace, and a walk-in closet. The 75-square-foot marble bathroom sports a tub with golden fixtures.



**Deluxe Original Cabin No. 8:**

This apricot-hued cabin is 205 square feet. In addition to a king-size bed, antique pieces and grey-beige marble in the 65-square-foot bathroom lend an elegant style. A walk-in closet and pullman bed are part of the configuration.



**Deluxe Outside Cabins No. 9 and 10:**

These two contemporary, elegant cabins once housed the nanny and tutor of the owner's daughter. Cabin No. 9 measures 215 square feet and has a marble bathroom with a tub. The 242-square-foot Cabin No. 10 is equipped with a shower. Both cabins have walk-in closets and ample storage space. They are located at the end of the hall and have their own staircase to the Promenade Deck.



**Outside Cabins No. 30, 31:**

These two 140-square-foot cabins on the Captain's and Lido Deck have a corner panorama window and elegant bathrooms with showers.



**Outside Cabins No. 32-37:**

Both 145-square-foot cabins have two single beds, panorama windows, and bathrooms fitted with showers. They are located on the Captain's Deck.



**Outside Cabins No. 18-25:**

These 135-square-foot cabins on the Promenade Deck are furnished similarly to cabins No. 32-37.



**Outside Cabins No. 28, 29:**

These 113-square-foot cabins on the Promenade Deck are furnished similarly to cabins No. 32-37.

**Cabins No. 14-17:**

These 102-square-foot cabins that once housed the ship's officers exude a maritime charm. They are fitted with upper and lower single beds.

We look forward to  
seeing you on board!



Taxidoefkeries



Head Office | Cyprus E-mail: nicosia@dtno.travel Tel.: +357 22758588 Nicosia Cyprus  
Larnaca Office | Cyprus E-mail: larnaca@dtno.travel Tel.: +357 24400341 Larnaca Cyprus  
Athens Office | Greece E-mail: athens@dtno.travel Tel.: +30 2107454398 Athens Greece

[www.taxidoefkeries.com](http://www.taxidoefkeries.com)

[www.dtno.travel](http://www.dtno.travel)



[www.seacloud.com](http://www.seacloud.com)